

XR-56 Plus



It's simple, the XR-56 Plus pump eliminates the need for complex in-well parts.

We have moved the in-well components out of the harsh environment and to the surface. The XR-56 Plus pump uses an integrated sensor system that reads the float position to supply and exhaust air to the pump based on well recharge rates. Therefore only one in-well moving part is all it takes for the pump to operate.

"I have not pulled my XR-56 pump in two years – in the same well I was pulling and re-building the other pump at least twice a year."

"We have heavy sludge and high precipitation on numerous wells. The XR-56 pumps have run longer and when cleaning is necessary it is accomplished in a 1/3 of the time and No parts to replace. The pumps are easier to remove from the well and the auto purge greatly reduces the weigh." "I have a silty condensate sump that required at minimum weekly attention – the XR-56 pump ran for over 500,000 cycles before cleaning was required."

- The integrated non-contact sensor system eliminates the need for complex in well mechanical valve systems.
- One moving part. a Teflon impregnated float = No replacement parts = Major costs savings
- Shorter 29" – lighter weight 11lbs – high flow 10 + GPM
- All pumps are High Temperature Compatible – 230 F
- Super easy cleaning – remove three bolts and you have complete access to the pump
- All stainless Steel construction – available in 304 or 316 to meet your application
- Easily adapts to existing well conditions

The XR-56 pump system operates in well conditions that others may fail. Why? Easy, the pump will cycle as long as the top and bottom sensors are triggered providing a positive on/off of the air valves.

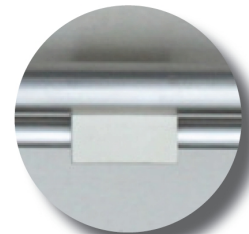
Even in crooked wells the where other pumps tend to stall the XR-56 Plus keeps going.



No complex air valves



All stainless steel construction



Small Teflon impregnated float increases the volume without adding length to the pump.

www.jeneergroup.com • 1-770-817-7828

Jeneer Group is here to understand your pumping challenges and work with you to develop a pumping solution to improve your current applications. © 2016 Jeneer Group Corporation. Specifications subject to change without notice.