

XR-56 Series Quick Start Instruction Manual

For pump part numbers - LP5100 – LP-5101 – LP-5200 LP-5201

Section 1: Safety

Site safety is a high priority when using the XR-56 pumping system. The inherent designs of the pump being shorter and lighter in weight are a few examples of our goal in promoting site safety. The system uses a low voltage power supplied by the solar panel and battery. Please use proper pre-cautions when installing the system such as attaching the negative side of the battery terminal first during installation.

Do not attempt to circumvent any of the safety features designed into the XR-56 pumping systems

Section 2: Quick Start Guide

Suggested Test Procedure prior to installation

Attach the sensor cable to the control module – attach the negative lead to the battery (Black) attach the Res lead to the battery (red) push the Pump on and LED on button – slide float to top then bottom position – counter will advance – hold float to top position for 10 seconds – move to bottom position –counter will not advance – push Pump On and LED on and move float to top and bottom positions – counter will advance.



Assemble pump

Lubricate and install the O-rings – slide pump body onto pump – install bottom check ball and set – insert bottom bolts and tighten – attach domed screen assembly and tighten.



Field Assembly using LA5123 installation kit

Pre field assembly - Open installation kit and attach the solar panel brackets to the solar panel using two of the 5/16 bolt with tabs facing towards the face of the solar panel. Attach the solar panel uni-strut to the back of the solar panel brackets using two 5.16 bolts and washers.



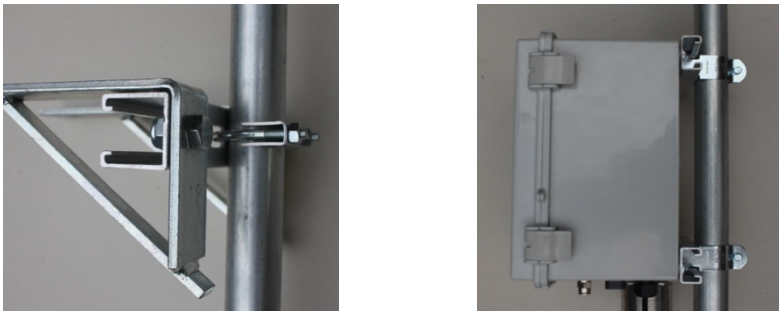
Using one of the pole clamp brackets attach the solar panel to one of the 5' poles



Field Assembly – Connect the two 5' poles using the coupling and tighten the four screws. Using two hose clamps and the two of the 4" long uni-strut brackets attach these to the well casing. Attach the pole assembly to the uni-struts using two pole clamps.

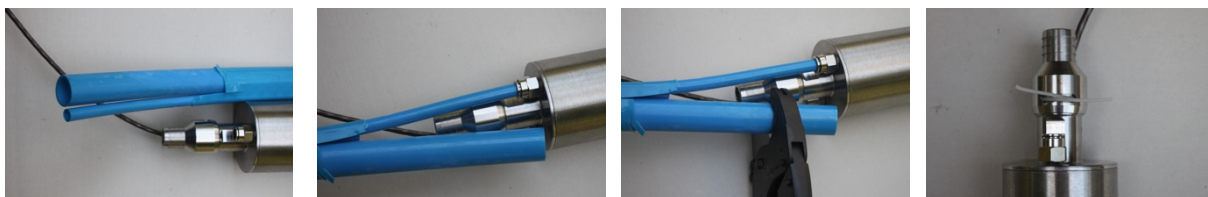


Install battery bracket to the pole using C- pipe clamp – using two of the pole clamps attach the NEMA IV module to the pole.



Pump Installation

Measure well depth and cut hose to the desired depth – (Pump should be installed at least 1' from the bottom of the well. Cut the tubing jacket Connect the air supply line, measure the discharge tubing and cut. Slide hose clamp over the discharge hose and attach the hose to the quick connect fitting. Inset the locking cable through the groove, cut and pinch ends. Attach the safety cable to the pump eye hook.



Slide the tubing through the well seal – tighten gland seals and attach the safety cable to the well seal. Lower pump and attach well seal and well head. Attach the discharge line to the force main.

Attach the ½” OD air supply line to PTC fitting on the Quick Exhaust valve – Purge air supply line and attach the NEMA IV module. Turn on air supply and set regulator – (about .5 PSI per foot of head) – Attach the sensor cable to the port on the NEMA IV enclosure

Power Connection

Insert the cable from the solar panel and the cable from the NEMA IV enclosure through the bottom of the battery box - connect the solar panel leads to the SunGard leads – attach the two Negative (Black) leads to the Negative post on the battery – attach the two Positive (Red) leads to the Positive post on the battery –attach the battery cover and secure.



Start Pump

Check all connections - Push the Pump On button and the pump will begin cycling